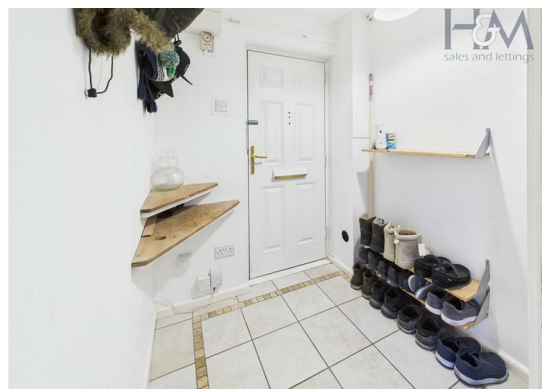
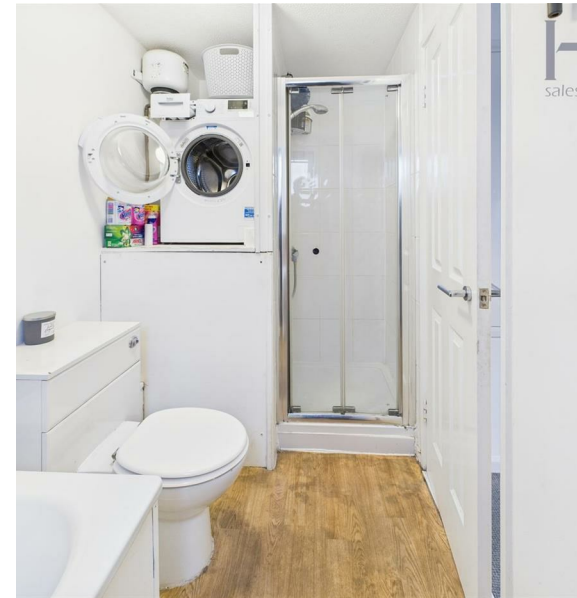


Round Mead, Stevenage, Hertfordshire, SG2 9PQ

£1,050 PCM

H&M
sales and lettings



One bedroom duplex apartment. Accommodation comprises of entrance hall, lounge and kitchen with built in oven and hob. To the first floor is a double bedroom and four piece bathroom suite. Outside are communal gardens and residents' parking available from 15th January 2026, Pets considered.



86 High Street
Stevenage
Hertfordshire
SG1 3DW
01438 728444

stevenage@homesandmortgages.co.uk



Energy Efficiency Rating

	Current	Potential
Very energy efficient - lower running costs		
(92 plus) A		
(81-91) B		
(69-80) C		
(55-68) D	63	66
(39-54) E		
(21-38) F		
(1-20) G		
Not energy efficient - higher running costs		
England & Wales	EU Directive 2002/91/EC	